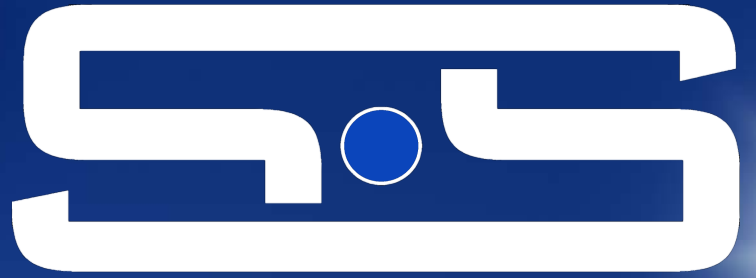


Environmental Test Chambers



SYSTEM OF SYSTEMS INC.



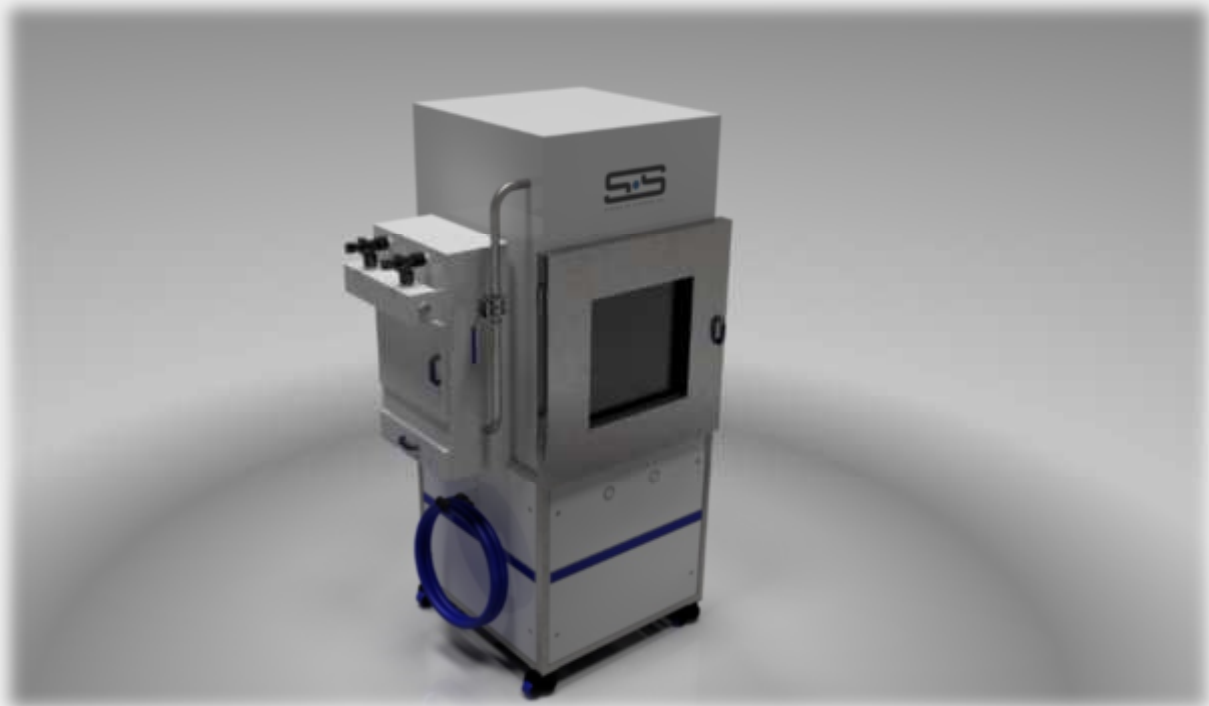
Settling Dust

SDC Series 1000/2000

www.systemofsystemsinc.com



Settling Dust Chamber



SDC-SERIES ENVIRONMENTAL TEST CHAMBERS

System of Systems, Inc. (SoS) introduces the SDC Series. This Settling Dust Chamber will test a component's resistance to a dust filled environment as specified in the **ISO-20653 (DIN/VDE 0470)**, **SAE J575**, **IEC 68-2-68** and the **MIL-STD 810F(Procedure III)**.

The unit under test (UTT) is placed in the chamber and compressed air injects dust into the chamber through a multi-point distribution nozzle. As the dust settles the UUT becomes covered.

The system has complete automation allowing for easy customization for any tests. Set your unique test parameters and have the dust injection intervals and cycles initiate automatically. And with the built-in vacuum hygiene system, automatic removal of dust and cleaning is simple and quick. All unwanted test media is filtered out of the chamber and collected in a removable dust capture container. The industrial vacuum system also comes equipped with a hose and attachments so that the user can thoroughly clean out the chamber and surrounding area without additional equipment.

Features

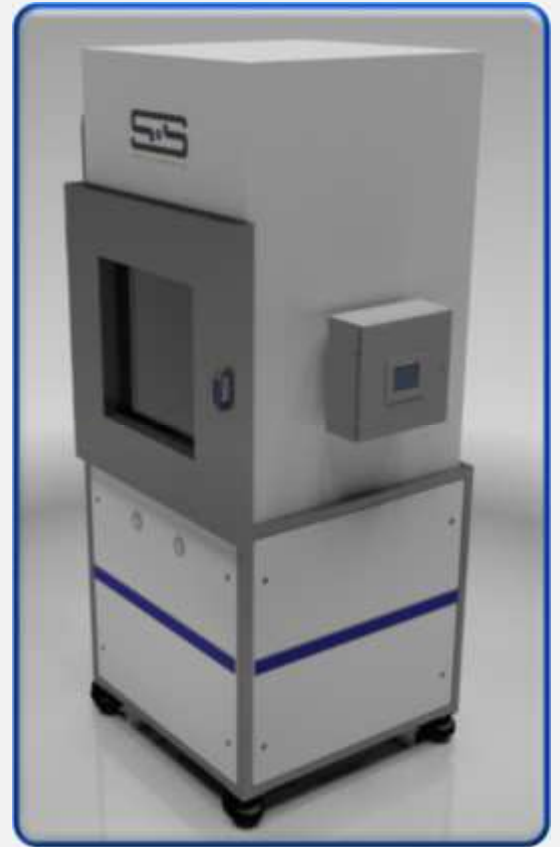
- ❖ Leveling castors for easy mobility and setup
- ❖ Stainless Steel Construction
- ❖ Vacuum Assisted Door Sealing
- ❖ Integrated Industrial Vacuum System
- ❖ Dust Injection Distribution Nozzle
- ❖ Color Touchscreen Automation
- ❖ Dust Separation System with filtration
- ❖ Window Cleaning Pulse Jet
- ❖ Dust Fluidizing System
- ❖ LED Interior Lighting
- ❖ Vacuum hose and attachments included

OPTIONAL ITEMS

*DRY COMPRESSED AIR IS REQUIRED (-40 DEW POINT TEMPERATURE)

1. COMPRESSED AIR DESICCANT DRYER

2. TEST MEDIA AVAILABLE FOR PURCHASE (SILICA DUST, TALCUM POWDER, PORTLAND CEMENT, ARIZONA DUST)



| Model | | SDC1000 | SDC2000 |
|---------------------|------------------|---|--|
| Interior Volume | Cubic feet/meter | 3.28 feet ³ (1 m ³) | 6.56 feet ³ (2 m ³) |
| Interior Dimensions | Width | 39.37 inches (1 m) | 78.74 inches (2 m) |
| | Depth | 39.37 inches (1 m) | 78.74 inches (2 m) |
| | Height | 39.37 inches (1 m) | 78.74 inches (2 m) |
| Exterior Dimensions | Width | 70 inches (1778 mm) | 110 inches (2794 mm) |
| | Depth | 54 inches (1372 mm) | 94 inches (2387.6 mm) |
| | Height | 107 inches (2718 mm) | 147 inches (3733.8 mm) |
| Power | | 115V, 230V/1PH/60Hz | 115V, 230V/1PH/60Hz |
| Compressed Air | | 80 PSI, 20CFM | 80PSI, 30CFM |
| Test Standards | | IEC 60529-IP5X,6X, ISO 20653-IP5X,6X, IEC 60068-2-68 La2, DIN/VDE 0470 Part 1, DIN 40050 Part 9, SAE J 575, MIL-STD 810F (Procedure III). | |

Sos Model - SDC1000

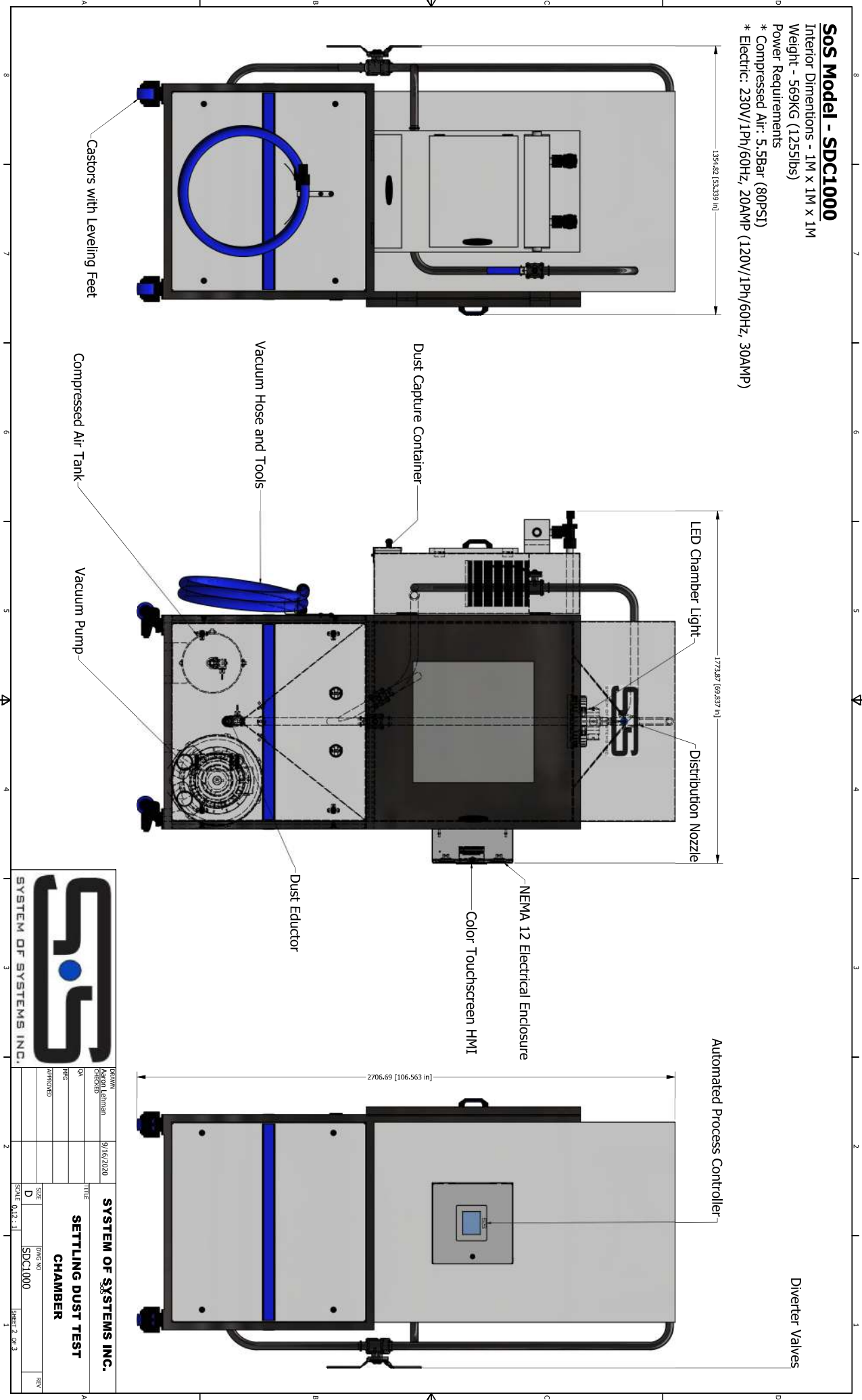
Interior Dimensions - 1M x 1M x 1M


Weight - 569KG (1255lbs)

Power Requirements

* Compressed Air: 5.5Bar (80PSI)

* Electric: 230V/1Ph/60Hz, 20AMP (120V/1Ph/60Hz, 30AMP)





SYSTEM OF SYSTEMS INC.

| | | | | |
|----------|-----------|--------|----------------------------|-----|
| DESIGN | 9/16/2020 | TITLE | SYSTEM OF SYSTEMS INC. | |
| APPROVED | | | SETTLING DUST TEST CHAMBER | |
| QA | | | | |
| PMG | | | | |
| APPROVED | | | | |
| SIZE | D | DWG NO | SDC1000 | REV |
| SCALE | AS SHOWN | | | |

SHEET 2 OF 3